

## OTOWA Signal line SPD SPU series for LSA Technology

## SPD with indicator, Easy Visual confirmation of operating state



- LSA disconnection block function integrated in the SPD provides protection during testing, disconnecting and patching
- Low voltage protection level for the protection of terminal
- Operating state / fault indication by red indicator flag
- EU RoHS Compliant with regulated substances

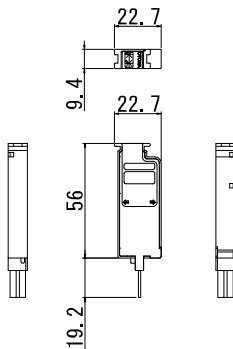
Type	SPU-GV24J	SPU-T170J
SPD Class (Category)	C2 , D1	
Nominal d.c. voltage (Un)	24V	48V
Max. continuous operating d.c. voltage (Uc)	36.5V	170V
Rated current	120mA	
AC Durability	60Hz 0.5A 1sec 5shots	
Voltage protection level C2:8/20 $\mu$ s:2kA D1:10/350 $\mu$ s:1kA	L-L : $\leq$ 80V L-E : $\leq$ 500V	L-L : $\leq$ 350V L-E : $\leq$ 500V
C2 Nominal discharge current (8/20 $\mu$ s)	5kA	
C2 Total Nominal discharge current (8/20 $\mu$ s) (In)	10kA	
D1 Lightning impulse current (10/350 $\mu$ s)	1kA	
D1 Total Lightning impulse current (10/350 $\mu$ s) (Iimp)	2.5kA	
Insertion Loss	$\leq$ 1.0dB (at 10MHz) $\leq$ 1.5dB (at 35MHz)	$\leq$ 1.0dB (at 5MHz) $\leq$ 1.5dB (at 10MHz)
Series impedance per line	9.5 ohm(s)	
Cut-off frequency line-PG (fG) Characteristic impedance 100 $\Omega$	35MHz	10MHz
Typical Capacitance(at 1MHz, 1Vrms)	L-L : $\leq$ 600pF L-E : $\leq$ 5pF	L-L : $\leq$ 100pF L-E : $\leq$ 5pF
Operating temperature range (Tu)	-10°C ~ +50°C	
Weight	approx. 14g	
Enclosure material / Color	Polycarbonate/Black	
Place of installation	Indoor installations	
Degree of protection	IP 20 (when plugged in)	
Fault indication	Red pin come out	
Test standards	IEC 61643-21	

## Optional accessories (LSA Technology)

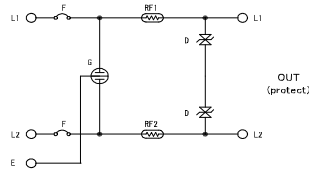
10-pair Earth bar



Type : 5909 3 041-00



Dimension drawing



Basic Circuit Diagram

## Other information

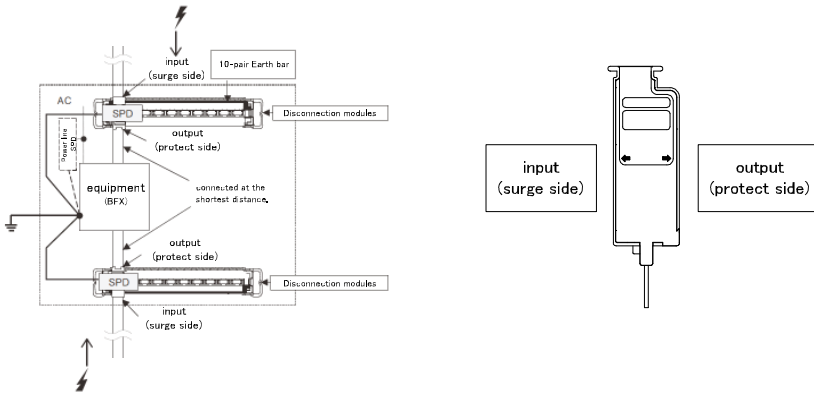


OTOWA web site

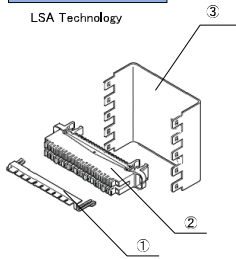


Instruction manual

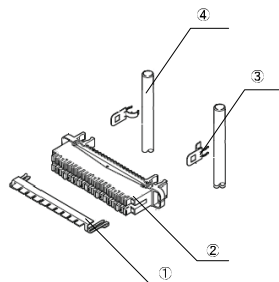
Connection



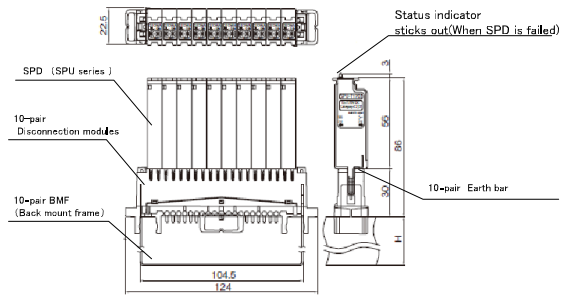
Installing LSA-PLUS



- [Installation to BFM]  
 ① 10-pair Earth bar  
 ② 10-pair Disconnection modules  
 ③ 10-pair BFM (Back mount frame)  
 ※Be sure to ground the BFM.



- [Installation to PF]  
 ① 10-pair Earth bar  
 ② 10-pair Disconnection modules  
 ③ Earth clip for LSA profile  
 ④ LSA Profile rod  
 ※Be sure to ground the LSA Profile

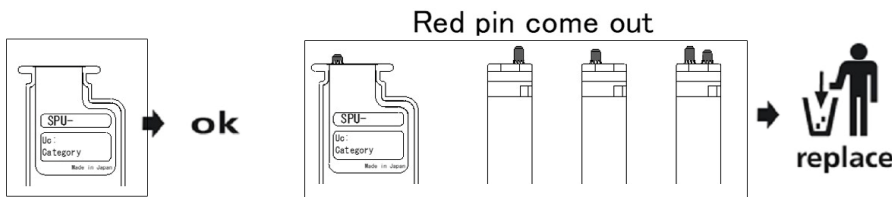


[Installation to 10-pair BFM]

Relative product

LSA-Plus	
	Type
10-pair Earth bar	5909 3 041-00
10-pair Disconnection modules	6089 1 121-60 6089 1 121-02
10-pair BFM 1Layer H:22mm	MF-22-01
10-pair BFM 3Layer H:22mm	MF-22-03
10-pair BFM 5Layer H:30mm	MF-30-05
10-pair BFM 10Layer H:50mm	MF-50-10-M
Earth clip for LSA profile	6089 3 202-00
LSA Profile rod	6460 1 046-05
	6460 1 046-10
	6460 1 046-20

Regular maintenance



Manufacturer



**OTOWA ELECTRIC CO.,LTD.**

5-6-20, Shioe, Amagasaki-city, Hyogo Pref. 〒661-0976, Japan

**CONTACT US**

<https://www.otowadenki.com>

Agency