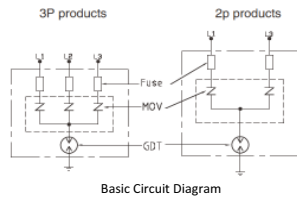
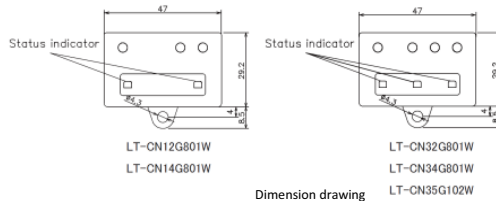


OTOWA Power line Type2 SPD for Machine protection LT-CN Series

Machine protection SPD ; with status



Basic Circuit Diagram



Dimension drawing

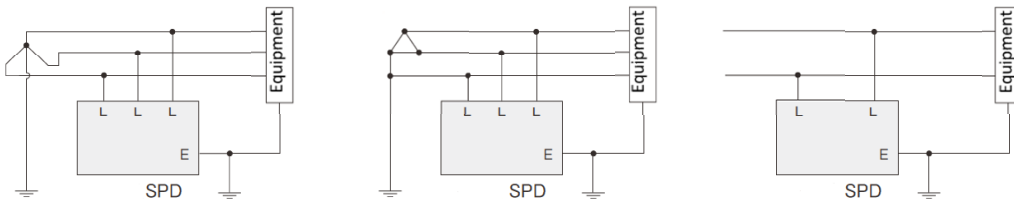
- NFPA79 (UL Listing)
- Single / Multi Phase application with compact SPD module
- Full mode protection (Common, differential mode) with compact body
- Low protection level : $U_p \leq 1.8kV$
- Safe disconnecter integrated with status indication
- EU RoHS Compliant with regulated

Type	LT-CN12G801W	LT-CN14G801W	LT-CN32G801W	LT-CN34G801W	LT-CN35G102W
SPD according to EN 61643-11 / IEC 61643-11	Type2				
Nominal a.c. voltage (U_n)	250V (50 / 60 Hz)	L-E : 250V L-L : 430V (50 / 60 Hz)	3 Φ Y : 250V 3 Φ Δ : 250V (50 / 60 Hz)	3 Φ Y : 430V 3 Φ Δ : 250V (50 / 60 Hz)	3 Φ Y : 500V 3 Φ Δ : 290V (50 / 60 Hz)
Max. continuous operating a.c. voltage (U_c)	275V (50 / 60 Hz)	L-E : 280V L-L : 480V (50 / 60 Hz)	3 Φ Y : 275V 3 Φ Δ : 275V (50 / 60 Hz)	3 Φ Y : 480V 3 Φ Δ : 280V (50 / 60 Hz)	3 Φ Y : 550V 3 Φ Δ : 320V (50 / 60 Hz)
Nominal discharge current (8/20 μ s) (I_n)	2.5kA				
Max. discharge current (8/20 μ s) (I_{max})	5kA				
Voltage protection level (U_p)	$\leq 1.5kV$	$\leq 1.8kV$	$\leq 1.5kV$	$\leq 1.8kV$	$\leq 2.0kV$
Response time	L-L : $\leq 3ns$				
Application system	1 phase		3 phase		
mode of protection	Common & Differential Mode				
Operating temperature range (T_u)	$-20^\circ C \sim +60^\circ C$				
Operating state / fault indication	Green / red				
Cross-sectional area	AWG14 x 250mm				
For mounting on	M4 screw				
Enclosure material	thermoplastic, UL 94 V-0				
Place of installation	Indoor installations				
Degree of protection	IP 20				
Certification	UL1449 Listing / NFPA79 / CSA / TUV				

OTOWA Type2 SPD LT-CN Series



Connection



Other information



OTOWA web site



Instruction manual

Manufacturer



OTOWA ELECTRIC CO.,LTD.

5-6-20, Shioe, Amagasaki-city, Hyogo Pref. 〒661-0976, Japan

CONTACT US

<https://www.otowadenki.com>

Agency